

# GIORGIO

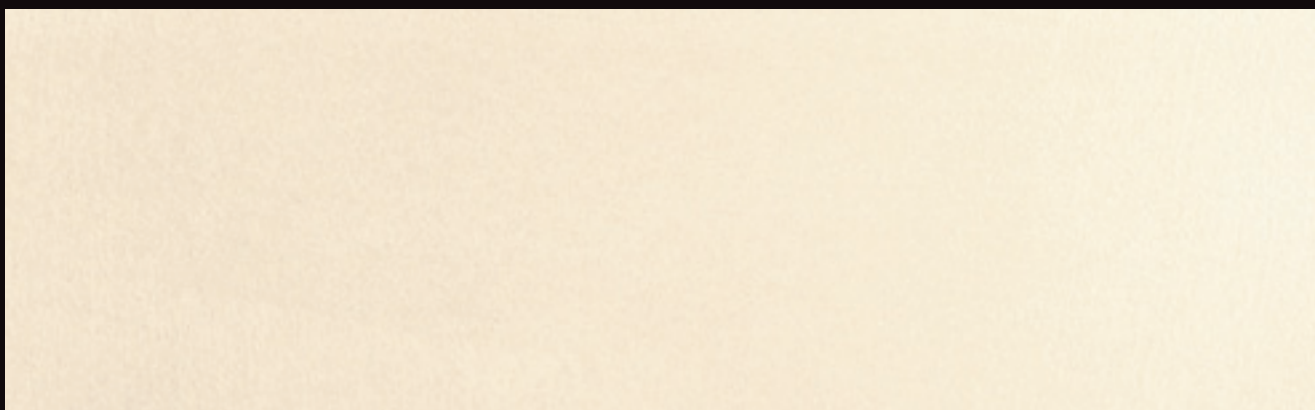
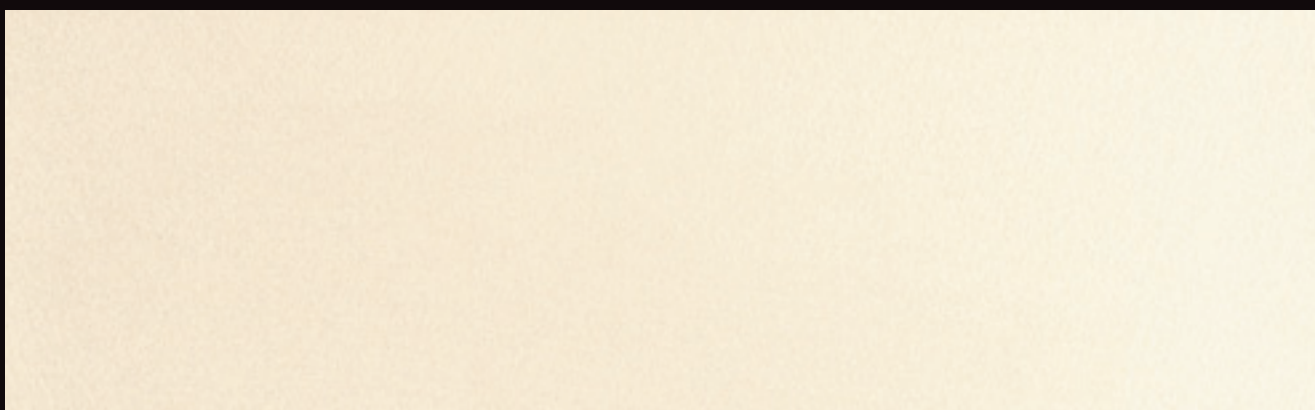


GIORGIO GRAESAN  
and Friends

Gioia 2000



Gioia 2000/1016



Gioia 2000/1018

Gioia è una pittura perlescente disponibile in 169 tonalità.  
Composto di scaglie di madreperla argento, illumina le tue pareti di riflessi iridescenti. Si stende in due passaggi con un apposito pennello, dopo la preparazione della parete con il nostro PRIMUS SABBIA.  
Offre una buona lavabilità ma può essere ulteriormente protetto con Vetro Lucido o Opaco per una Garanzia di Lavaggio Integrale.  
I segni delle pennellate sono evidenziati dalla illuminazione con luce radente.





# GIORGIO ARMANI

Gioia 2GF

Gioia 3GF

Colori fotografici ed indicativi - Photographie and suggested colours - Couleurs photographiques et indicatives - Fotografische und hinweisende Farben - Colores fotograficos y sugerencias - Culti fotografice și sugerate - Φωτογραφικά και προτεινόμενα χρώματα.





# GIORGIO ARMANI

Gioia 3SB



Gioia 1SB

Colori fotografici ed indicativi - Photographie and suggested colours - Couleurs photographiques et indicatives - Fotografische und hinweisende Farben - Colores fotograficos y sugerencias - Culiuri fotografice și sugerate - Φωτογραφικά και προτεινόμενα χρώματα.





# GIORGIO ARMANI

Gioia 4SC



Colori fotografici ed indicativi - Photographie and suggested colours - Couleurs photographiques et indicatives - Fotografische und hinweisende Farben - Colores fotograficos y sugerencias - Culiuri fotografice și sugerate - Φωτογραφικά και προτεινόμενα χρώματα.



# GIORGIA

Gioia 2GE



Gioia 4GE

Colori fotografici ed indicativi - Photographie and suggested colours - Couleurs photographiques et indicatives - Fotografische und hinweisende Farben - Colores fotograficos y sugerenciais - Culoiri fotografice și sugerate - Φωτογραφικά και προτεινόμενα χρώματα.



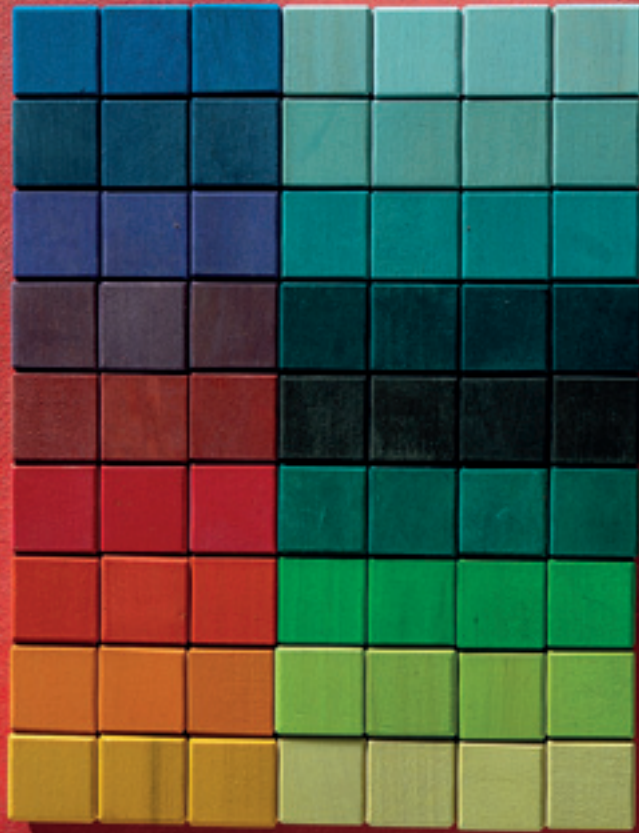
# GIORGIA

Gioia 4GB



Gioia 1GB

Colori fotografici ed indicativi - Photographie and suggested colours - Couleurs photographiques et indicatives - Fotografische und hinweisende Farben - Colores fotograficos y sugerencias - Culiți fotografice și sugerate - Φωτογραφικά και προτεινόμενα χρώματα.



# GIORGIA

Gioia 3AR

Colori fotografici ed indicativi - Photographie and suggested colours - Couleurs photographiques et indicatives - Fotografische und hinweisende Farben - Colores fotograficos y sugerenciais - Culoari fotografice și sugerate - Φωτογραφικά και προτεινόμενα χρώματα.

Gioia 1AR





# GIORGIO ARMANI

Gioia 3ZC



Gioia 1ZC



GIORGIO ARMANI

FRAMMENTI

Gioia 3NB  
Frammenti Argento 1018



Colori fotografici ed indicativi - Photographie and suggested colours - Couleurs photographiques et indicatives - Fotografische und hinweisende Farben - Colores fotograficos y sugerencias - Culiți fotografice și sugerate - Φωτογραφικά και προτεινόμενα χρώματα.



GIOIA

I P E R V E T R O

Gioia 2000  
Iper Vetro 1029

Colori fotografici ed indicativi - Photographie and suggested colours - Couleurs photographiques et indicatives - Fotografische und hinweisende Farben - Colores fotograficos y sugerencias - Culoari fotografice și sugerate - Φωτογραφικά και προτεινόμενα χρώματα.

Gioia 1SD  
Iper Vetro 1029

# FORMULE/CONSUMI

I colori si ottengono miscelando i nostri Additivi come indicato in questa tabella. I consumi nella applicazione possono variare in base alle superfici e agli assorbimenti. La media dei consumi è riportata in questa tabella.

Colors are obtained mixing our additives as shown in the table. Consumption may change according to surfaces and absorption. The average consumption is shown in the table.

Les couleurs sont obtenues en mélangeant nos additifs comme indiqué dans le tableau.

La consommation peut varier selon les surfaces et l'absorption. La consommation moyenne est indiquée dans le tableau.

Die auf den vorherigen Seiten angegebenen Farbtöne werden erzielt, indem unsere Abtönkonzentrate mit den Basisprodukten entsprechend der zugehörigen Tabelle gemischt werden. Der Verbrauch fertig abgetönter Ware kann je nach Oberfläche und Absorption variieren. Der Durchschnittsverbrauch ist in dieser Tabelle angegeben.

Los colores se obtienen mezclando nuestros Aditivos siguiendo esta tabla. El consumo puede variar según la superficie y la absorción. El consumo medio se muestra en esta tabla.

Culorile indicate se obțin amestecând Aditivii noștri conform tabelului de mai jos. În timpul aplicării, consumul poate varia în funcție de suprafață și de capacitatea de absorbție a acesteia. Media consumurilor este indicată în acest tabel.

Οι αποχρώσεις που παρουσιάζονται στις προηγούμενες σελίδες έχουν αναπαραχθεί με την χρήση των χρωστικών μας, ακολουθώντας τον παρακάτω πίνακα. Η κατανάλωση προϊόντος ανά τετραγωνικό μέτρο μπορεί να διαφέρει ανάλογα με την επιφάνεια και την απορροφητικότητα της. Η μέση κατανάλωση αναφέρεται σε αυτό το πίνακα.

G1: 2000/5 + 0,750 Colore

G2: 2000/5 + 0,250 Colore

G3: 2000/5 + 0,062 Colore

G4: 2000/5 + 0,020 Colore

Consumi - Coverage - Consommation - Ergiebigkeit - Consumos - Consumul - Απόδοση

Primus Sabbia  
6/7 mq/litro

Gioia  
7/9 mq/litro

Confezioni:  
da 1, 2,5, 5 e 15

Contenuto VOC  
max 20 g/l

I COLORI DELLA PIETRA

| GE | GG | GF | GD | GB | GA | GC |
|----|----|----|----|----|----|----|
|    |    |    |    |    |    |    |
|    |    |    |    |    |    |    |
|    |    |    |    |    |    |    |
|    |    |    |    |    |    |    |

G1

G2

G3

G4

I COLORI DI PORTOFINO

| KB | KA | KF | KC | KD | KG | KE |
|----|----|----|----|----|----|----|
|    |    |    |    |    |    |    |
|    |    |    |    |    |    |    |
|    |    |    |    |    |    |    |
|    |    |    |    |    |    |    |

G1

G2

G3

G4

I COLORI DEL SOLE

| ZA | ZB | ZC | ZD | ZE | ZF | ZG |    |
|----|----|----|----|----|----|----|----|
|    |    |    |    |    |    |    | G1 |
|    |    |    |    |    |    |    | G2 |
|    |    |    |    |    |    |    | G3 |
|    |    |    |    |    |    |    | G4 |

I COLORI DELL'ANIMA

| AR | AA | AL | AM | AF | AV | AZ |    |
|----|----|----|----|----|----|----|----|
|    |    |    |    |    |    |    | G1 |
|    |    |    |    |    |    |    | G2 |
|    |    |    |    |    |    |    | G3 |
|    |    |    |    |    |    |    | G4 |



I COLORI DI NEW YORK

NA

NB

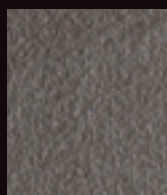
NS

NL

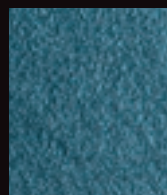
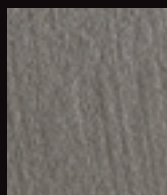
NR

NO

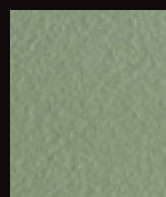
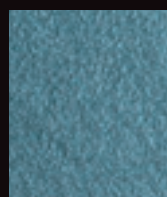
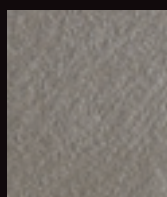
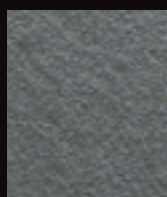
NY



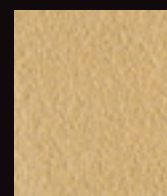
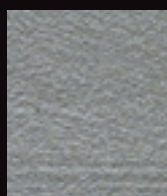
G1



G2



G3



G4

I COLORI DI LONDRA

SC

SB

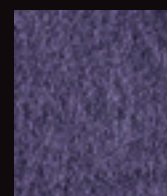
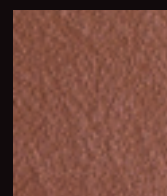
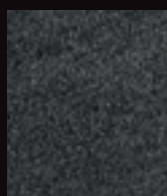
SD

SE

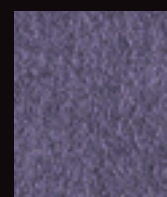
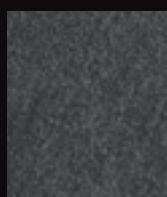
SA

SV

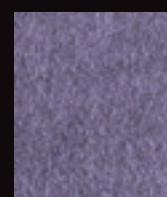
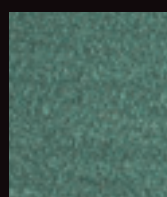
SG



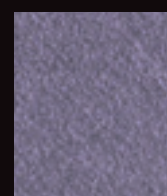
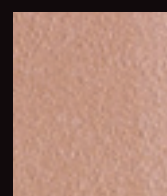
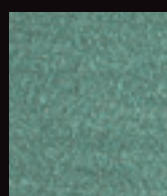
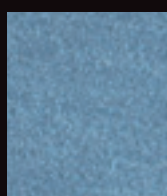
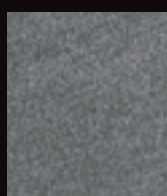
G1



G2



G3



G4

**Gioia** is a water based pearlescent paint available in 169 colours that match other Giorgio Graesan products.

Containing mother of pearl flakes it gives your walls an elegant soft finish, highlighted by your creative brush strokes that enhance the beauty within the product. Gioia is applied using a special brush in two coats over the preparation coat of PRIMUS SABBIA. The product can be wiped down but should you need extra protection from water or wear additional coats of either Vetro Opaco or Vetro Lucido will make the surface more robust. Direct light makes more evident brush effect.

**Gioia** est une peinture nacréee disponible en 169 teintes.

Elle est composée d'écaillies de nacre en argent et illumine vos murs de reflets irisés. Elle s'applique en deux couches grâce à un pinceau spécifique après avoir préparé le mur avec notre PRIMUS SABBIA. Elle se lave facilement mais elle peut être protégée par Vetro Lucido ou Vetro Opaco afin de garantir un lavage complet.

Les traces de pinceau sont mises en évidence par une lumière rasante.

**Gioia** ist eine perlmuttartige Farbe, die in 169 Farbtönen verfügbar ist.

Sie besteht aus silberfarbigem Perlmutt und bringt Ihre Wände mit irisierenden Reflexion zum Leuchten. Die Farbe wird mit einem entsprechenden Pinsel in zwei Schichten aufgetragen und wird vorher mit unserem PRIMUS SABBIA vorbereitet. Sie bietet eine gute Waschbarkeit, kann allerdings noch mehr mit 'Vetro Lucido' (glänzend) oder 'Opaco' (matt) geschützt werden, sodass sie scheuerbeständig wird. Die Zeichen der Pinselstriche werden durch die Beleuchtung mit Streiflicht hervorgehoben.

**Gioia** es una pintura nacarada disponible en 169 tonalidades.

Compuesta de escamas de nácar plateado, ilumina tus paredes con reflejos iridiscentes. Se aplica en dos pasos con una brocha específica, después de preparar la pared con nuestro PRIMUS SABBIA. Ofrece una buena lavabilidad, pero además puede protegerse con Vetro Lucido u Vetro Opaco para garantizar un lavado integral.

Las marcas de la brocha se aprecia con la iluminación oblicua.

**Gioia** este o vopsea perlata , disponibila in 169 de nuante.

Compusa din fulgi de sidex argintiu , ilumineaza peretii cu reflexii multiple. Se aplica in doua straturi cu o pensula speciala, dupa pregatirea suportului cu fondul PRIMUS SABBIA . Oferta o buna lavabilitate , dar poate fi protejat suplimentar cu Vetro Lucido sau Vetro Opaco pentru ai oferi produsului o lavabilitate integrala.

Urmele de pensula se vor evidentia cu ajutorul iluminarii directe.

Το **Gioia** είναι ένα ιριδίζον-περλέ προϊόν που διατίθεται σε 169 αποχρώσεις. Αποτελείται από νιφάδες από ασημί φιλντισι που φωτίζουν τους τοίχους σας με ιριδίζουσες αντανακλάσεις. Εφαρμόζεται σε δύο στρώσεις, χρησιμοποιώντας το ειδικό πινέλο, αφού προηγουμένως έχετε προετοιμάσει τις επιφάνειες με το αστάρι μας PRIMUS SABBIA. Το Gioia πλένεται και καθαρίζεται, αλλά για μια Εγγύηση Πλήρους Πλυσίματος μπορείτε να το προστατεύσετε περαιτέρω με την ρητίνη προστασίας Vetro Lucido ή Opaco.



Applicazione Primus Sabbia

---



Colorare il prodotto se necessario

---



Miscelare Gioia

---



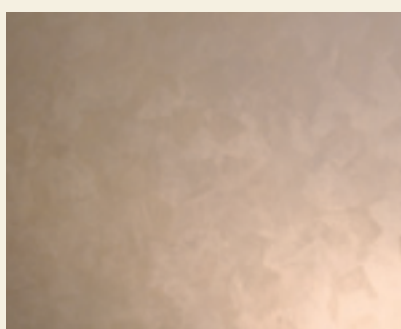
Prima mano

---



Seconda mano

---



Lasciare asciugare

---

Il video applicativo è disponibile su: [www.giorgiograesan.it/video/gioia](http://www.giorgiograesan.it/video/gioia)

GIORGIO GRAESAN  
and Friends



make  
**ART**  
not  
WAR